

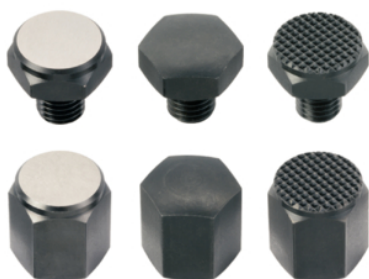
插銷 EH 22690.

產品描述

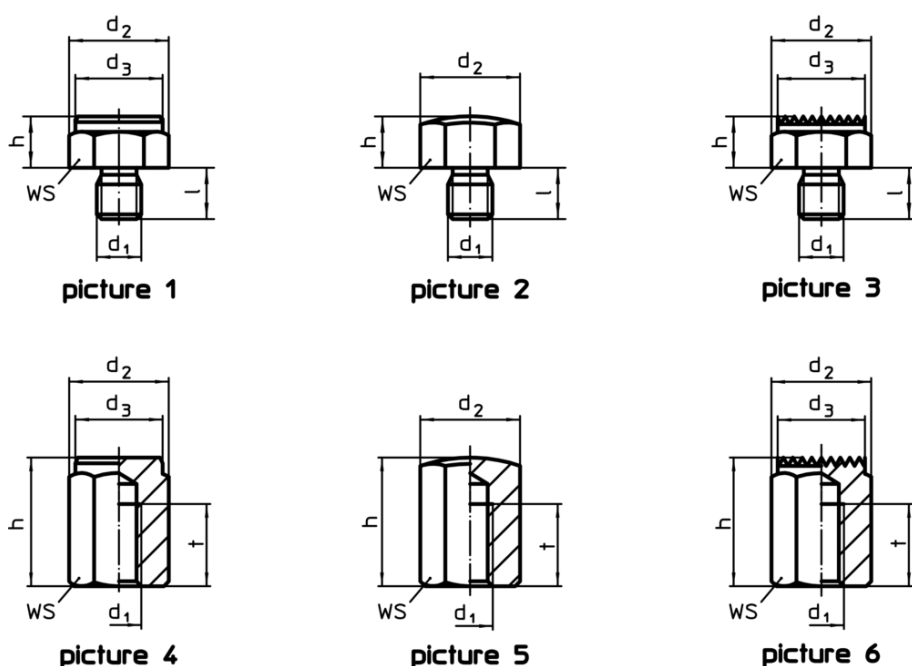
適合作底座元件、止動元件及推力墊。

材質

- 鋼，表面硬化，染黑




圖面




訂單資訊

h	d ₁	尺寸 [mm]		l	t	WS [mm]	起始扭力 max. [Nm]	重量 [g]	RoHS	REACH	品號
帶外螺紋和平實的表面 – 相片 1											
10 ±0,01	M 8	19,4	17	10	-	17	18	21	RoHS 認證	contains SVHC materials >0.1% w/w	22690.0021
10 ±0,01	M10	21,9	19	12	-	19	32	28	RoHS 認證	contains SVHC materials >0.1% w/w	22690.0031
15 ±0,01	M10	21,9	19	12	-	19	32	40	RoHS 認證	contains SVHC materials >0.1% w/w	22690.0032
10 ±0,01	M12	25,2	22	14	-	22	60	34	RoHS 認證	contains SVHC materials >0.1% w/w	22690.0001
15 ±0,01	M12	25,2	22	14	-	22	60	56	RoHS 認證	contains SVHC materials >0.1% w/w	22690.0002


¹⁾ 母螺牙的扭力矩規矩為螺紋梢, quality 8. 旋入的部份必須超過螺紋長度。

h	d ₁	尺寸				WS [mm]	起始扭力 max. [Nm]	 [g]	RoHS	REACH	品號
		d ₂	d ₃	l	t						
15 ±0,01	M16	33,0	30	19	-	30	140	110	RoHS 認證	contains SVHC materials >0.1% w/w	22690.0042
20 ±0,01	M16	33,0	30	19	-	30	140	140	RoHS 認證	contains SVHC materials >0.1% w/w	22690.0043
20 ±0,01	M20	40,0	36	24	-	36	290	214	RoHS 認證	contains SVHC materials >0.1% w/w	22690.0052
25 ±0,01	M20	40,0	36	24	-	36	290	257	RoHS 認證	contains SVHC materials >0.1% w/w	22690.0053
20 ±0,01	M24	46,0	41	29	-	41	498	300	RoHS 認證	contains SVHC materials >0.1% w/w	22690.0062
25 ±0,01	M24	46,0	41	29	-	41	498	356	RoHS 認證	contains SVHC materials >0.1% w/w	22690.0063
30 ±0,01	M24	46,0	41	29	-	41	498	412	RoHS 認證	contains SVHC materials >0.1% w/w	22690.0064
含公螺紋 和球形面 – 相片 2											
10 ±0,10	M 8	19,4	-	10	-	17	18	20	RoHS 認證	contains SVHC materials >0.1% w/w	22690.0121
10 ±0,10	M10	21,9	-	12	-	19	32	27	RoHS 認證	contains SVHC materials >0.1% w/w	22690.0131
15 ±0,10	M10	21,9	-	12	-	19	32	40	RoHS 認證	contains SVHC materials >0.1% w/w	22690.0132
10 ±0,10	M12	25,2	-	14	-	22	60	37	RoHS 認證	contains SVHC materials >0.1% w/w	22690.0101
15 ±0,10	M12	25,2	-	14	-	22	60	53	RoHS 認證	contains SVHC materials >0.1% w/w	22690.0102
15 ±0,10	M16	33,0	-	19	-	30	140	105	RoHS 認證	contains SVHC materials >0.1% w/w	22690.0142
20 ±0,10	M16	33,0	-	19	-	30	140	135	RoHS 認證	contains SVHC materials >0.1% w/w	22690.0143
20 ±0,10	M20	40,0	-	24	-	36	290	206	RoHS 認證	contains SVHC materials >0.1% w/w	22690.0152
25 ±0,10	M20	40,0	-	24	-	36	290	249	RoHS 認證	contains SVHC materials >0.1% w/w	22690.0153
20 ±0,10	M24	46,0	-	29	-	41	498	258	RoHS 認證	contains SVHC materials >0.1% w/w	22690.0162
25 ±0,10	M24	46,0	-	29	-	41	498	342	RoHS 認證	contains SVHC materials >0.1% w/w	22690.0163
30 ±0,10	M24	46,0	-	29	-	41	498	398	RoHS 認證	contains SVHC materials >0.1% w/w	22690.0164


¹⁾ 母螺牙的扭力矩規矩為螺紋梢, quality 8. 旋入的部份必須超過螺紋長度.

h	d ₁	尺寸				WS [mm]	起始扭力 max. [Nm]	 [g]	RoHS	REACH	品號
		d ₂ [mm]	d ₃	l	t						
含公螺紋 和肋紋面 – 相片 3											
10 ±0,10	M 8	19,4	17	10	–	17	18	20	RoHS 認證	contains SVHC materials >0.1% w/w	22690.0221
10 ±0,10	M10	21,9	19	12	–	19	32	27	RoHS 認證	contains SVHC materials >0.1% w/w	22690.0231
15 ±0,10	M10	21,9	19	12	–	19	32	39	RoHS 認證	contains SVHC materials >0.1% w/w	22690.0232
10 ±0,10	M12	25,2	22	14	–	22	60	38	RoHS 認證	contains SVHC materials >0.1% w/w	22690.0201
15 ±0,10	M12	25,2	22	14	–	22	60	54	RoHS 認證	contains SVHC materials >0.1% w/w	22690.0202
15 ±0,10	M16	33,0	30	19	–	30	140	106	RoHS 認證	contains SVHC materials >0.1% w/w	22690.0242
20 ±0,10	M16	33,0	30	19	–	30	140	136	RoHS 認證	contains SVHC materials >0.1% w/w	22690.0243
20 ±0,10	M20	40,0	36	24	–	36	290	210	RoHS 認證	contains SVHC materials >0.1% w/w	22690.0252
25 ±0,10	M20	40,0	36	24	–	36	290	253	RoHS 認證	contains SVHC materials >0.1% w/w	22690.0253
20 ±0,10	M24	46,0	41	29	–	41	498	297	RoHS 認證	contains SVHC materials >0.1% w/w	22690.0262
25 ±0,10	M24	46,0	41	29	–	41	498	353	RoHS 認證	contains SVHC materials >0.1% w/w	22690.0263
30 ±0,10	M24	46,0	41	29	–	41	498	410	RoHS 認證	contains SVHC materials >0.1% w/w	22690.0264
有母牙 平面 公差l ₁ = ±0.01 – 相片 4											
15 ±0,01	M 8	19,4	17	15	6	17	25 ¹⁾	25	RoHS 認證	contains SVHC materials >0.1% w/w	22690.0321
25 ±0,01	M 8	19,4	17	25	12	17	25 ¹⁾	42	RoHS 認證	contains SVHC materials >0.1% w/w	22690.0323
20 ±0,01	M10	21,9	19	20	10	19	46 ¹⁾	40	RoHS 認證	contains SVHC materials >0.1% w/w	22690.0333
30 ±0,01	M10	21,9	19	30	15	19	46 ¹⁾	61	RoHS 認證	contains SVHC materials >0.1% w/w	22690.0335
40 ±0,01	M10	21,9	19	40	15	19	46 ¹⁾	85	RoHS 認證	contains SVHC materials >0.1% w/w	22690.0337
20 ±0,01	M12	25,2	22	20	10	22	82 ¹⁾	52	RoHS 認證	contains SVHC materials >0.1% w/w	22690.0301
25 ±0,01	M12	25,2	22	25	15	22	82 ¹⁾	65	RoHS 認證	contains SVHC materials >0.1% w/w	22690.0302
30 ±0,01	M12	25,2	22	30	18	22	82 ¹⁾	79	RoHS 認證	contains SVHC materials >0.1% w/w	22690.0303

¹⁾ 母螺牙的扭力矩規矩為螺紋梢, quality 8. 旋入的部份必須超過螺紋長度.

h	d ₁	尺寸				WS [mm]	起始扭力 max. [Nm]	 [g]	RoHS	REACH	品號
		d ₂	d ₃	l	t						
40 ±0,01	M12	25,2	22	40	18	22	82 ¹⁾	111	RoHS 認證	contains SVHC materials >0.1% w/w	22690.0304
50 ±0,01	M12	25,2	22	50	18	22	82 ¹⁾	142	RoHS 認證	contains SVHC materials >0.1% w/w	22690.0305
30 ±0,01	M16	33,0	30	30	20	30	206 ¹⁾	140	RoHS 認證	contains SVHC materials >0.1% w/w	22690.0343
50 ±0,01	M16	33,0	30	50	24	30	206 ¹⁾	257	RoHS 認證	contains SVHC materials >0.1% w/w	22690.0345
40 ±0,01	M20	40,0	36	40	26	36	407 ¹⁾	279	RoHS 認證	contains SVHC materials >0.1% w/w	22690.0353
60 ±0,01	M20	40,0	36	60	38	36	407 ¹⁾	431	RoHS 認證	contains SVHC materials >0.1% w/w	22690.0355
40 ±0,01	M24	46,0	41	40	26	41	698 ¹⁾	341	RoHS 認證	contains SVHC materials >0.1% w/w	22690.0363
60 ±0,01	M24	46,0	41	60	38	41	698 ¹⁾	530	RoHS 認證	contains SVHC materials >0.1% w/w	22690.0365
有母牙 球形面 – 相片 5											
15 ±0,10	M 8	19,4	–	15	6	17	25 ¹⁾	24	RoHS 認證	contains SVHC materials >0.1% w/w	22690.0421
25 ±0,10	M 8	19,4	–	25	12	17	25 ¹⁾	41	RoHS 認證	contains SVHC materials >0.1% w/w	22690.0423
20 ±0,10	M10	21,9	–	20	10	19	46 ¹⁾	38	RoHS 認證	contains SVHC materials >0.1% w/w	22690.0433
30 ±0,10	M10	21,9	–	30	15	19	46 ¹⁾	60	RoHS 認證	contains SVHC materials >0.1% w/w	22690.0435
40 ±0,10	M10	21,9	–	40	15	19	46 ¹⁾	84	RoHS 認證	contains SVHC materials >0.1% w/w	22690.0437
20 ±0,10	M12	25,2	–	20	10	22	82 ¹⁾	50	RoHS 認證	contains SVHC materials >0.1% w/w	22690.0401
25 ±0,10	M12	25,2	–	25	15	22	82 ¹⁾	62	RoHS 認證	contains SVHC materials >0.1% w/w	22690.0402
30 ±0,10	M12	25,2	–	30	18	22	82 ¹⁾	76	RoHS 認證	contains SVHC materials >0.1% w/w	22690.0403
40 ±0,10	M12	25,2	–	40	18	22	82 ¹⁾	109	RoHS 認證	contains SVHC materials >0.1% w/w	22690.0404
50 ±0,10	M12	25,2	–	50	18	22	82 ¹⁾	141	RoHS 認證	contains SVHC materials >0.1% w/w	22690.0405
30 ±0,10	M16	33,0	–	30	20	30	206 ¹⁾	136	RoHS 認證	contains SVHC materials >0.1% w/w	22690.0443
50 ±0,10	M16	33,0	–	50	24	30	206 ¹⁾	252	RoHS 認證	contains SVHC materials >0.1% w/w	22690.0445

¹⁾ 母螺牙的扭力矩規矩為螺紋梢, quality 8. 旋入的部份必須超過螺紋長度.

h	d ₁	尺寸				WS [mm]	起始扭力 max. [Nm]	 [g]	RoHS	REACH	品號
		d ₂	d ₃	l	t						
40 ±0,10	M20	40,0	-	40	26	36	407 ¹⁾	272	RoHS 認證	contains SVHC materials >0.1% w/w	22690.0453
60 ±0,10	M20	40,0	-	60	38	36	407 ¹⁾	423	RoHS 認證	contains SVHC materials >0.1% w/w	22690.0455
40 ±0,10	M24	46,0	-	40	26	41	698 ¹⁾	340	RoHS 認證	contains SVHC materials >0.1% w/w	22690.0463
60 ±0,10	M24	46,0	-	60	38	41	698 ¹⁾	530	RoHS 認證	contains SVHC materials >0.1% w/w	22690.0465
有母牙 肋紋面 – 相片 6											
15 ±0,10	M 8	19,4	17	15	6	17	25 ¹⁾	24	RoHS 認證	contains SVHC materials >0.1% w/w	22690.0521
25 ±0,10	M 8	19,4	17	25	12	17	25 ¹⁾	41	RoHS 認證	contains SVHC materials >0.1% w/w	22690.0523
20 ±0,10	M10	21,9	19	20	10	19	46 ¹⁾	38	RoHS 認證	contains SVHC materials >0.1% w/w	22690.0533
30 ±0,10	M10	21,9	19	30	15	19	46 ¹⁾	60	RoHS 認證	contains SVHC materials >0.1% w/w	22690.0535
40 ±0,10	M10	21,9	19	40	15	19	46 ¹⁾	84	RoHS 認證	contains SVHC materials >0.1% w/w	22690.0537
20 ±0,10	M12	25,2	22	20	10	22	82 ¹⁾	50	RoHS 認證	contains SVHC materials >0.1% w/w	22690.0501
25 ±0,10	M12	25,2	22	25	15	22	82 ¹⁾	63	RoHS 認證	contains SVHC materials >0.1% w/w	22690.0502
30 ±0,10	M12	25,2	22	30	18	22	82 ¹⁾	77	RoHS 認證	contains SVHC materials >0.1% w/w	22690.0503
40 ±0,10	M12	25,2	22	40	18	22	82 ¹⁾	109	RoHS 認證	contains SVHC materials >0.1% w/w	22690.0504
50 ±0,10	M12	25,2	22	50	18	22	82 ¹⁾	141	RoHS 認證	contains SVHC materials >0.1% w/w	22690.0505
30 ±0,10	M16	33,0	30	30	20	30	206 ¹⁾	137	RoHS 認證	contains SVHC materials >0.1% w/w	22690.0543
50 ±0,10	M16	33,0	30	50	24	30	206 ¹⁾	254	RoHS 認證	contains SVHC materials >0.1% w/w	22690.0545
40 ±0,10	M20	40,0	36	40	26	36	407 ¹⁾	266	RoHS 認證	contains SVHC materials >0.1% w/w	22690.0553
60 ±0,10	M20	40,0	36	60	38	36	407 ¹⁾	418	RoHS 認證	contains SVHC materials >0.1% w/w	22690.0555
40 ±0,10	M24	46,0	41	40	26	41	698 ¹⁾	338	RoHS 認證	contains SVHC materials >0.1% w/w	22690.0563
60 ±0,10	M24	46,0	41	60	38	41	698 ¹⁾	528	RoHS 認證	contains SVHC materials >0.1% w/w	22690.0565

¹⁾ 母螺牙的扭力矩規矩為螺紋梢, quality 8. 旋入的部份必須超過螺紋長度.

應用範例

